



COSTA BLANCA NORTH SELECTED PROPERTIES

SEPTEMBER 2015

LA COSTA BLANCA

"Spain is considered to be one of the countries with the highest quality of life in the world."

Más de 218 kilómetros de costa repletos de playas de aguas tranquilas y arenas finas, con más de 320 días de sol al año y un clima privilegiado, y con una temperatura media anual de 20° C.

More than 218 kilometers of coastline full of beaches, calm waters and fine sand, with over 320 days of sunshine a year and a privileged climate, with an average temperature of 20° C.



COSTA BLANCA NORTH SELECTED PROPERTIES

SEPTEMBER 2015



PASIÓN POR LA VIDA PASSION FOR LIFE

España está considerado uno de los países con mayor calidad de vida del mundo. Su clima mediterráneo, cultura, gastronomía y entorno, han dado como resultado un lugar único y singular para vivir y disfrutar de la vida.

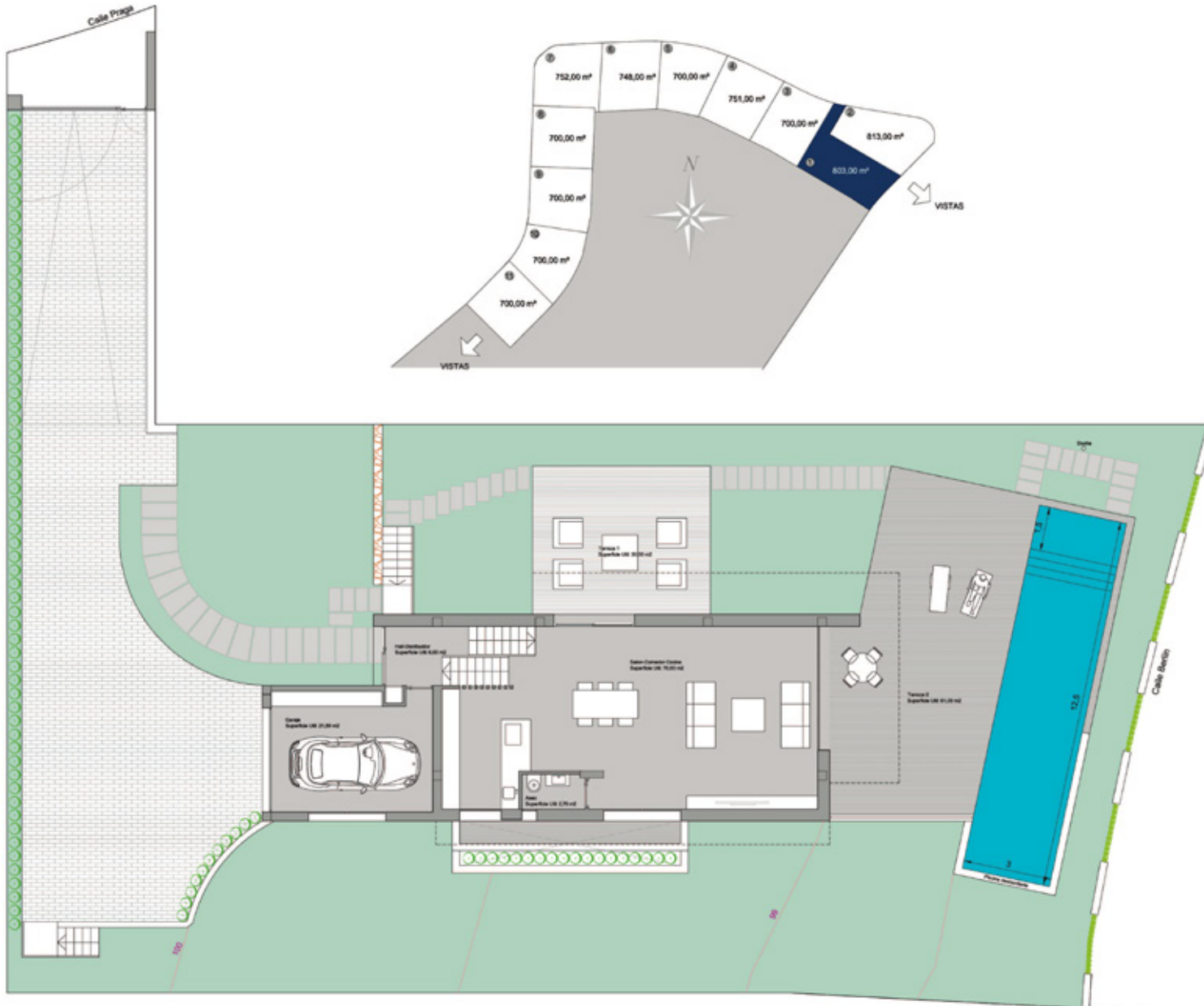
Sus costas, playas y montañas dan lugar a paisajes espectaculares a cada paso que se da por la península, en especial en la costa mediterránea.

Spain is considered one of the countries with the highest quality of life worldwide. Its Mediterranean climate, culture, food and environment, have resulted in a unique and singular place to live and enjoy life.

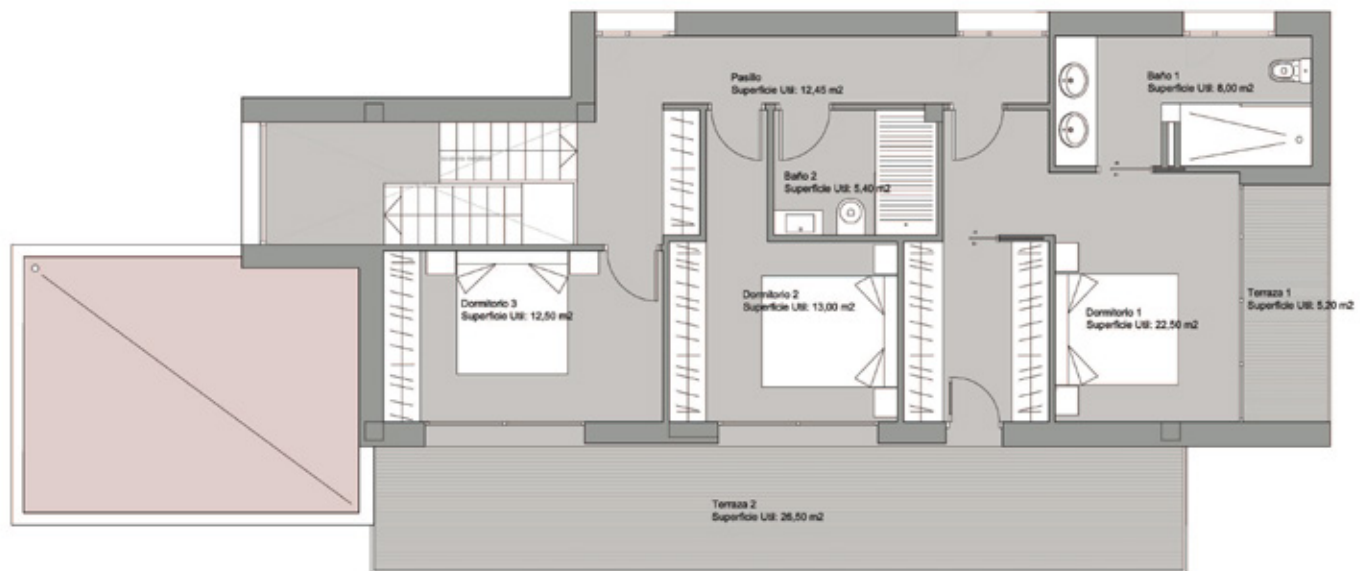
Its coasts, beaches, and mountains give rise to spectacular landscapes all around the country, especially on the Mediterranean coast scenery.



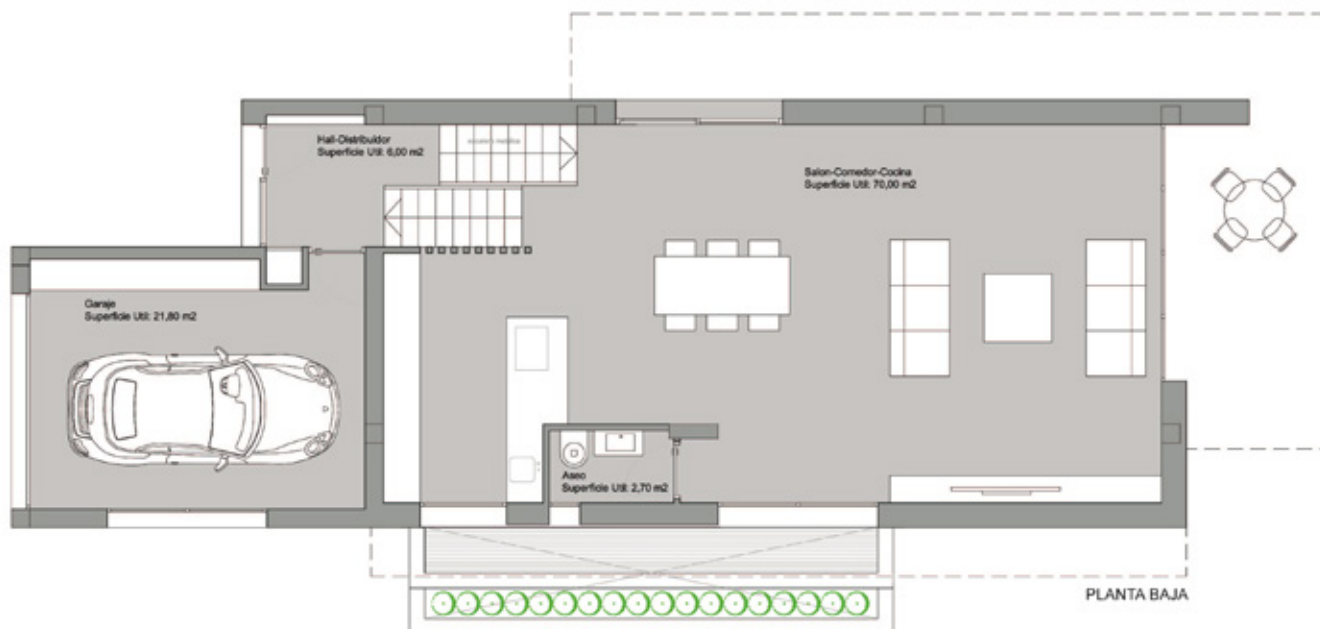
FINESTRAT PLOT 1



Superficie Parcela: 803 m²



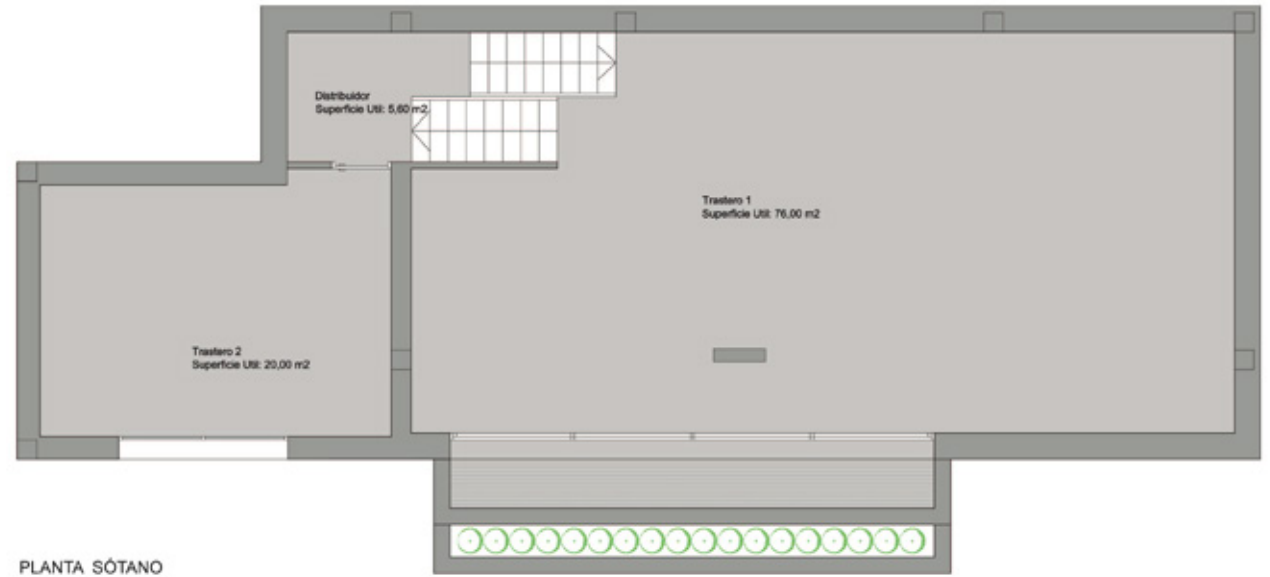
PLANTA PRIMERA



PLANTA BAJA

SUPERFICIE PARCELA	803,00 m ²
Total sup.construída	460,50 m²
Sup. construída P. sótano	124,00 m ²
Sup. construída P. baja	124,00 m ²
Sup. construída P. primera	92,50 m ²
Terrazas P. Baja	90,00 m ²
Terrazas P. Primera	30,00 m ²

SUPERFICIE PARCELA	803,00 m ²
Total sup.construída	460,50 m²
Sup. construída P. sótano	124,00 m ²
Sup. construída P. baja	124,00 m ²
Sup. construída P. primera	92,50 m ²
Terrazas P. Baja	90,00 m ²
Terrazas P. Primera	30,00 m ²





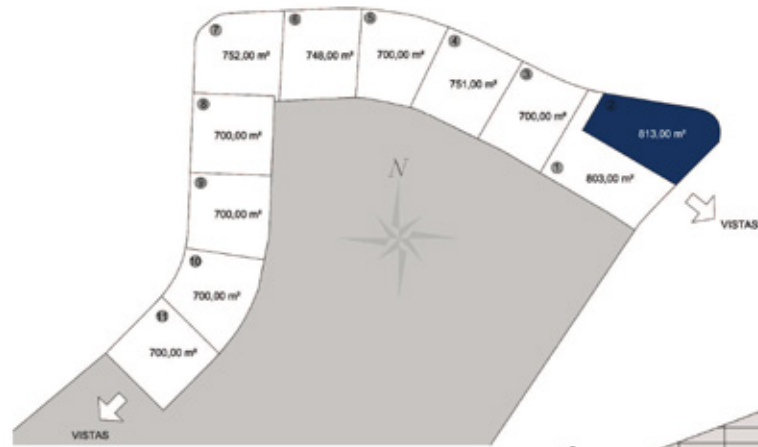
FINESTRAT PLOT 2



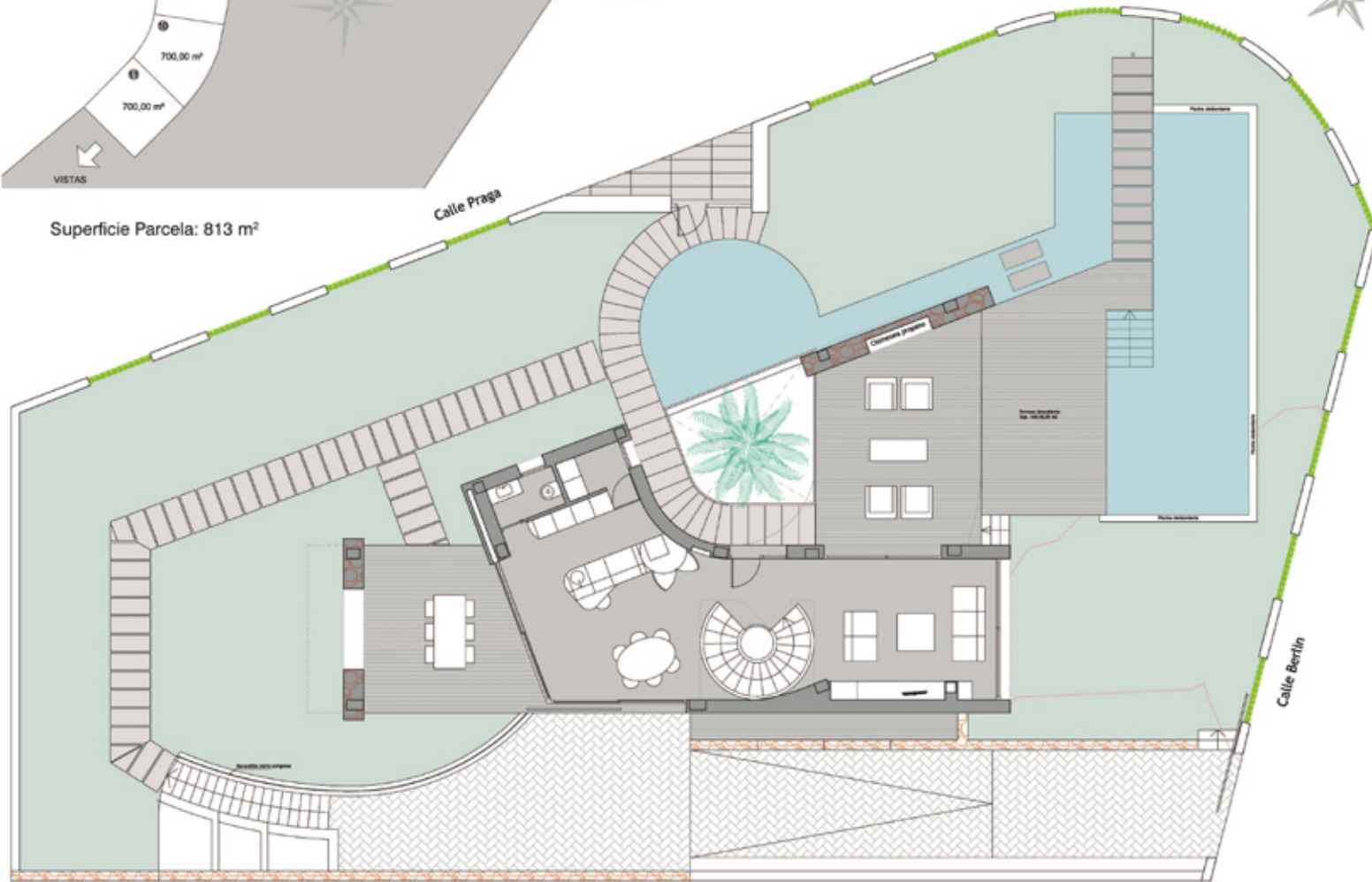
Entrance view



Kitchen entrance view

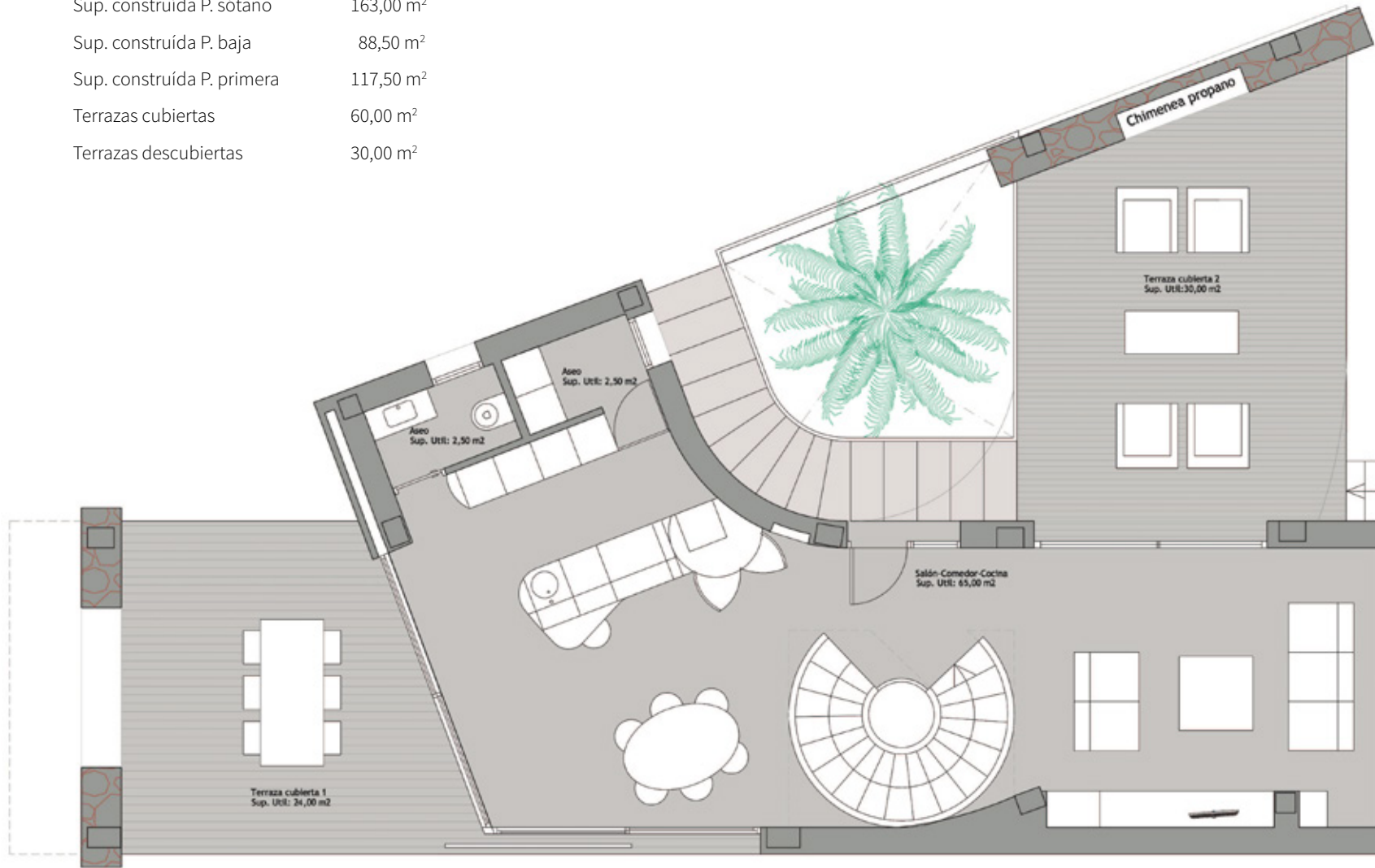


Superficie Parcela: 813 m²



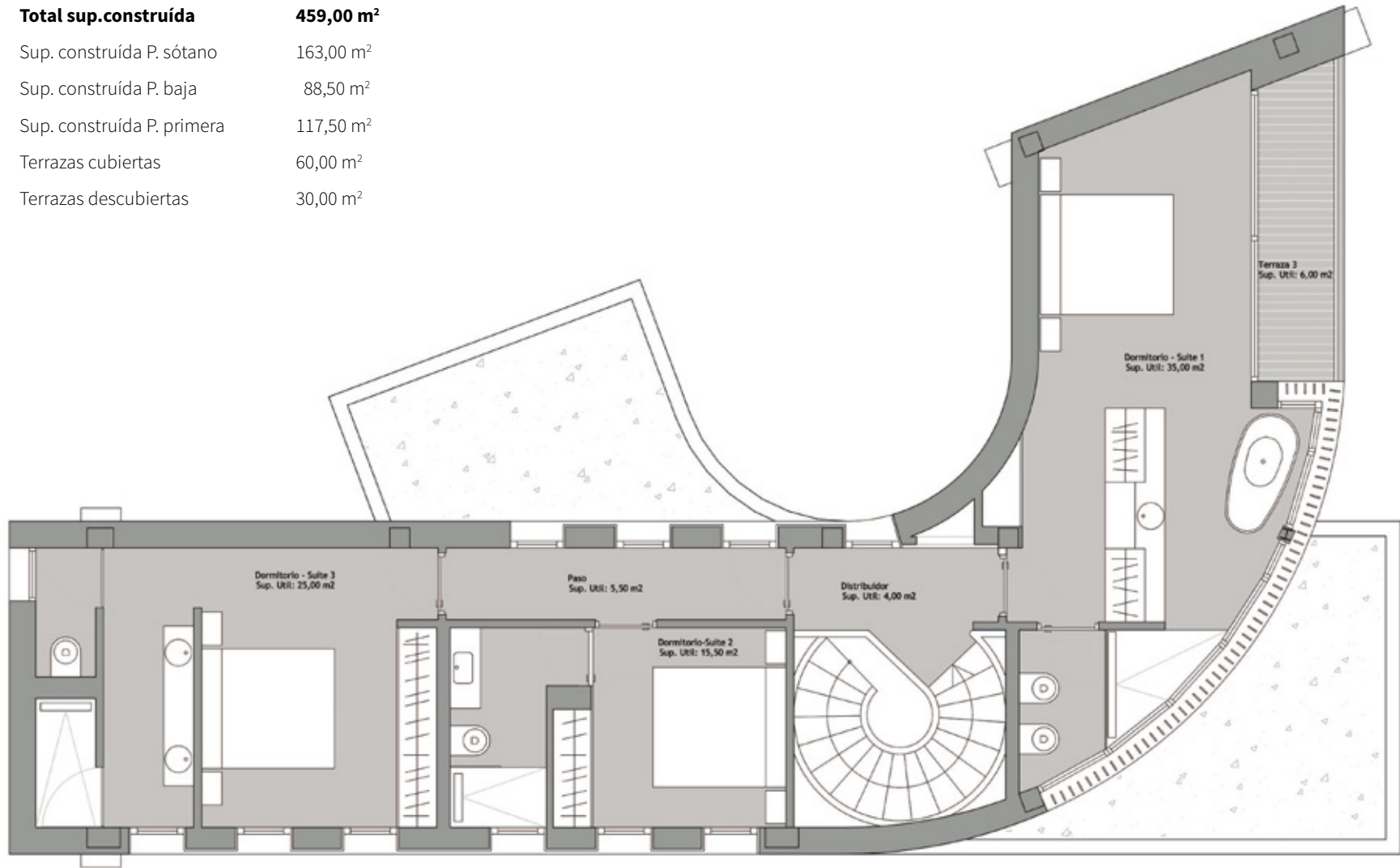
Planta parcela

SUPERFICIE PARCELA	813,00 m ²
Total sup.construída	459,00 m²
Sup. construída P. sótano	163,00 m ²
Sup. construída P. baja	88,50 m ²
Sup. construída P. primera	117,50 m ²
Terrazas cubiertas	60,00 m ²
Terrazas descubiertas	30,00 m ²



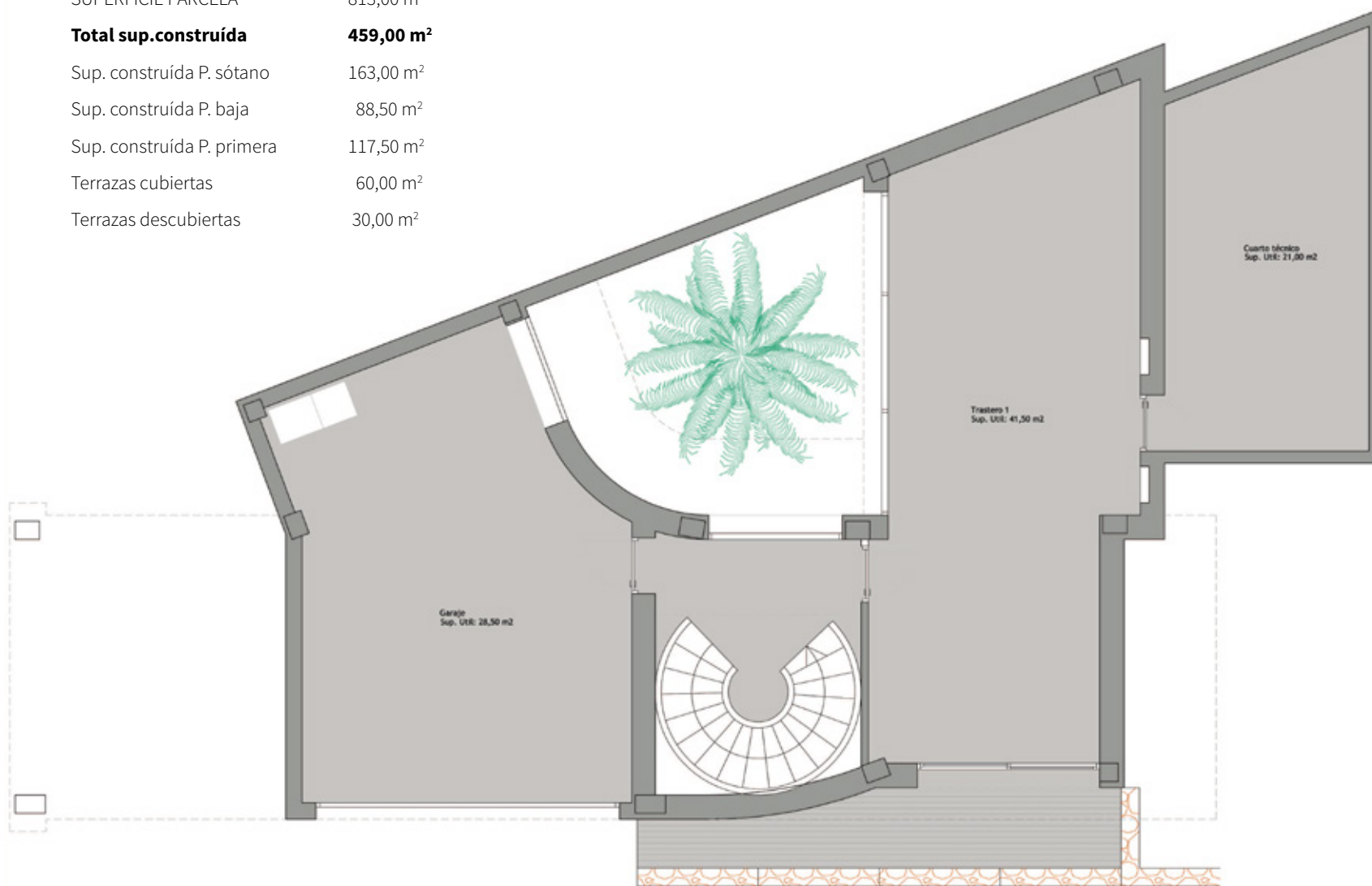
PLANTA BAJA

SUPERFICIE PARCELA	813,00 m ²
Total sup.construída	459,00 m²
Sup. construída P. sótano	163,00 m ²
Sup. construída P. baja	88,50 m ²
Sup. construída P. primera	117,50 m ²
Terrazas cubiertas	60,00 m ²
Terrazas descubiertas	30,00 m ²



PLANTA PRIMERA

SUPERFICIE PARCELA	813,00 m ²
Total sup.construída	459,00 m²
Sup. construída P. sótano	163,00 m ²
Sup. construída P. baja	88,50 m ²
Sup. construída P. primera	117,50 m ²
Terrazas cubiertas	60,00 m ²
Terrazas descubiertas	30,00 m ²

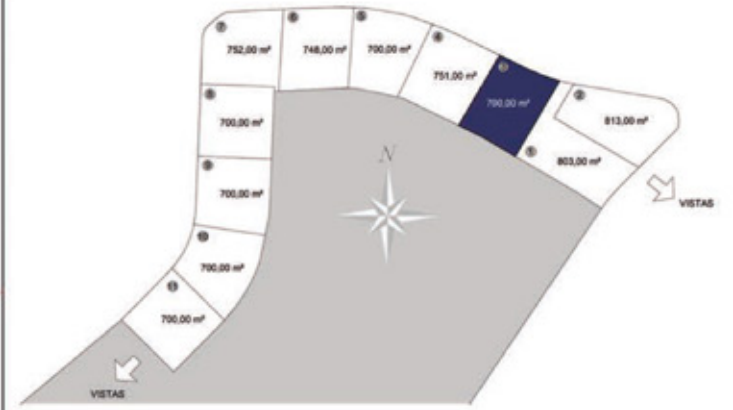


PLANTA SÓTANO



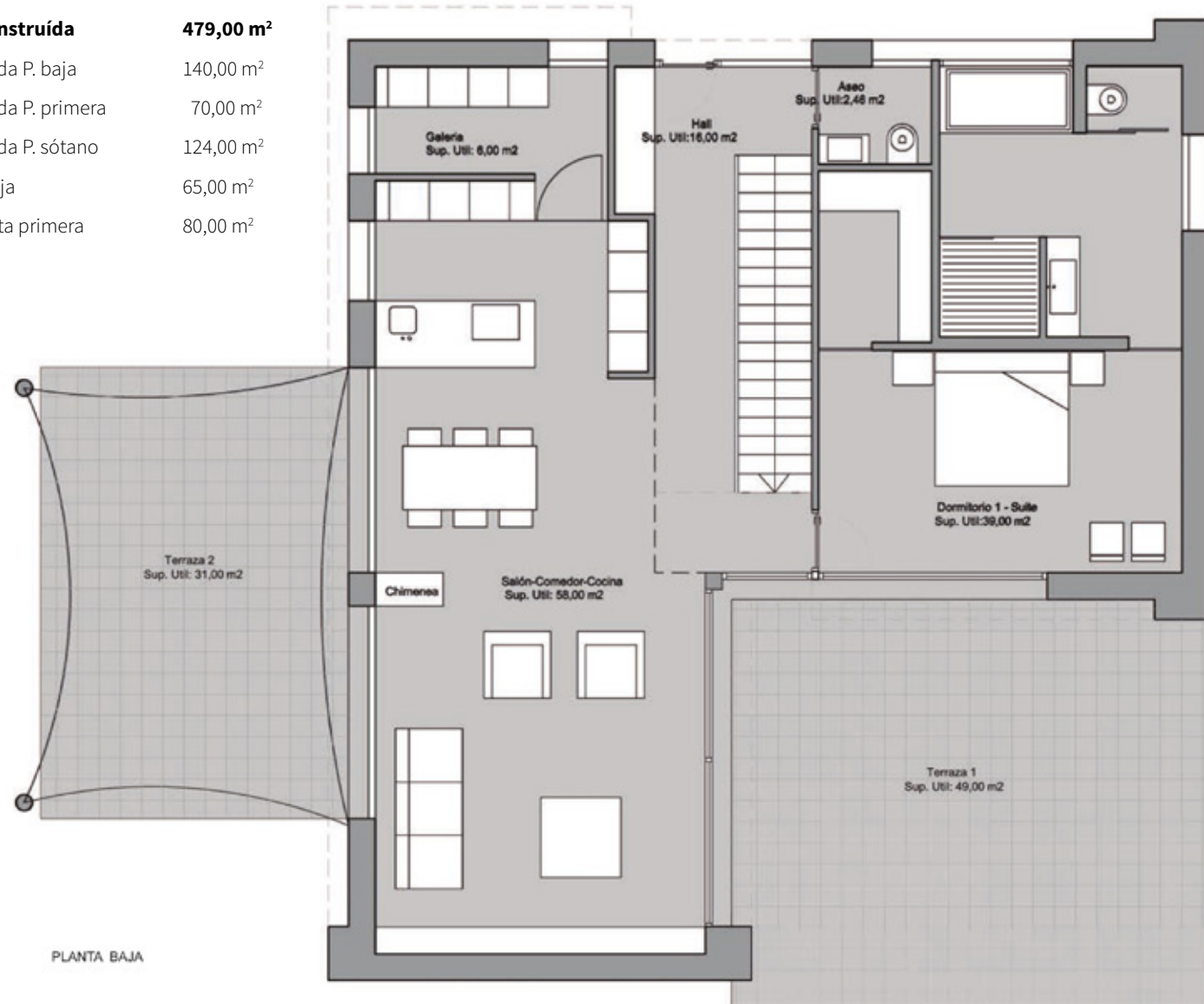
FINESTRAT PLOT 3



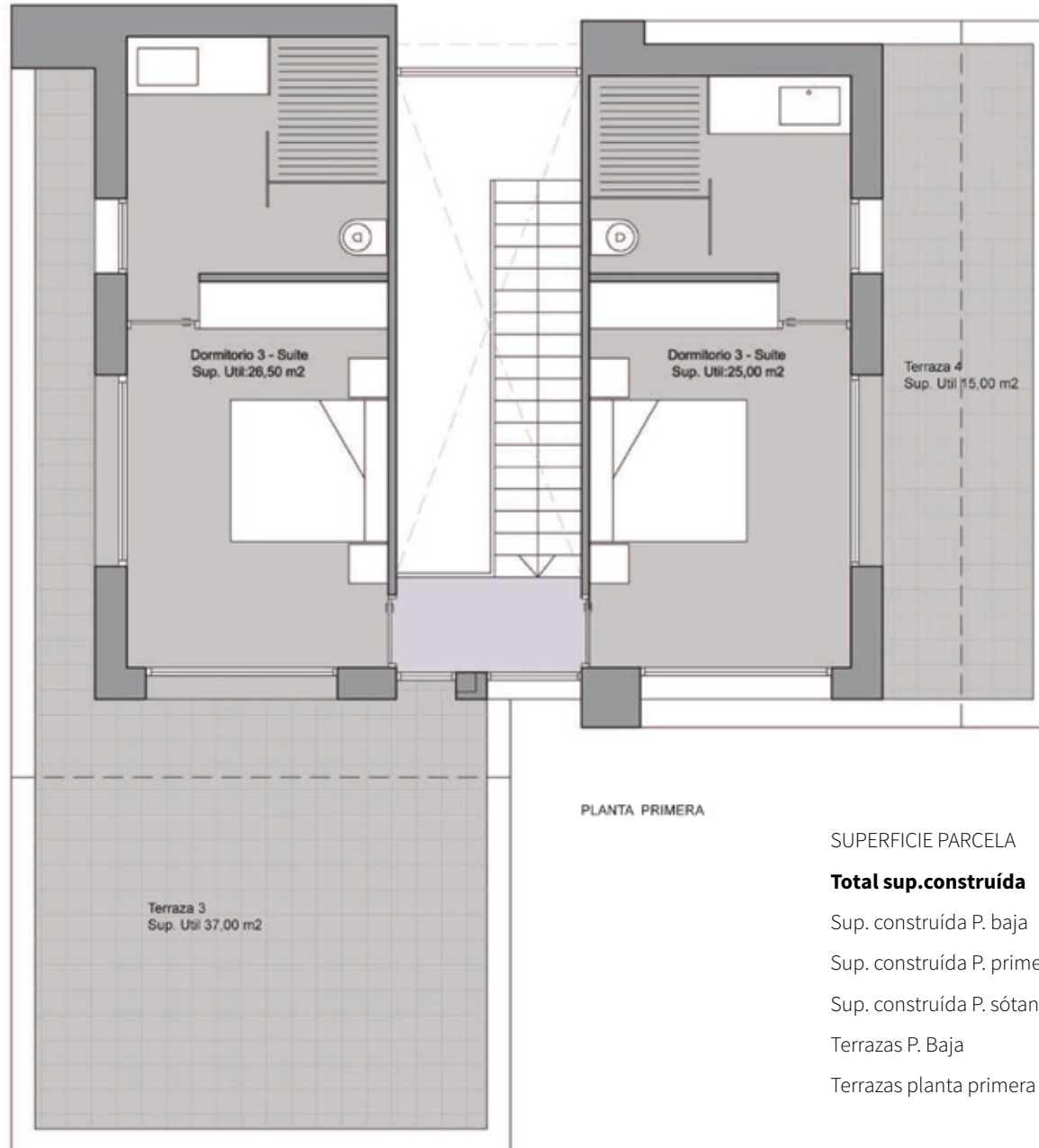


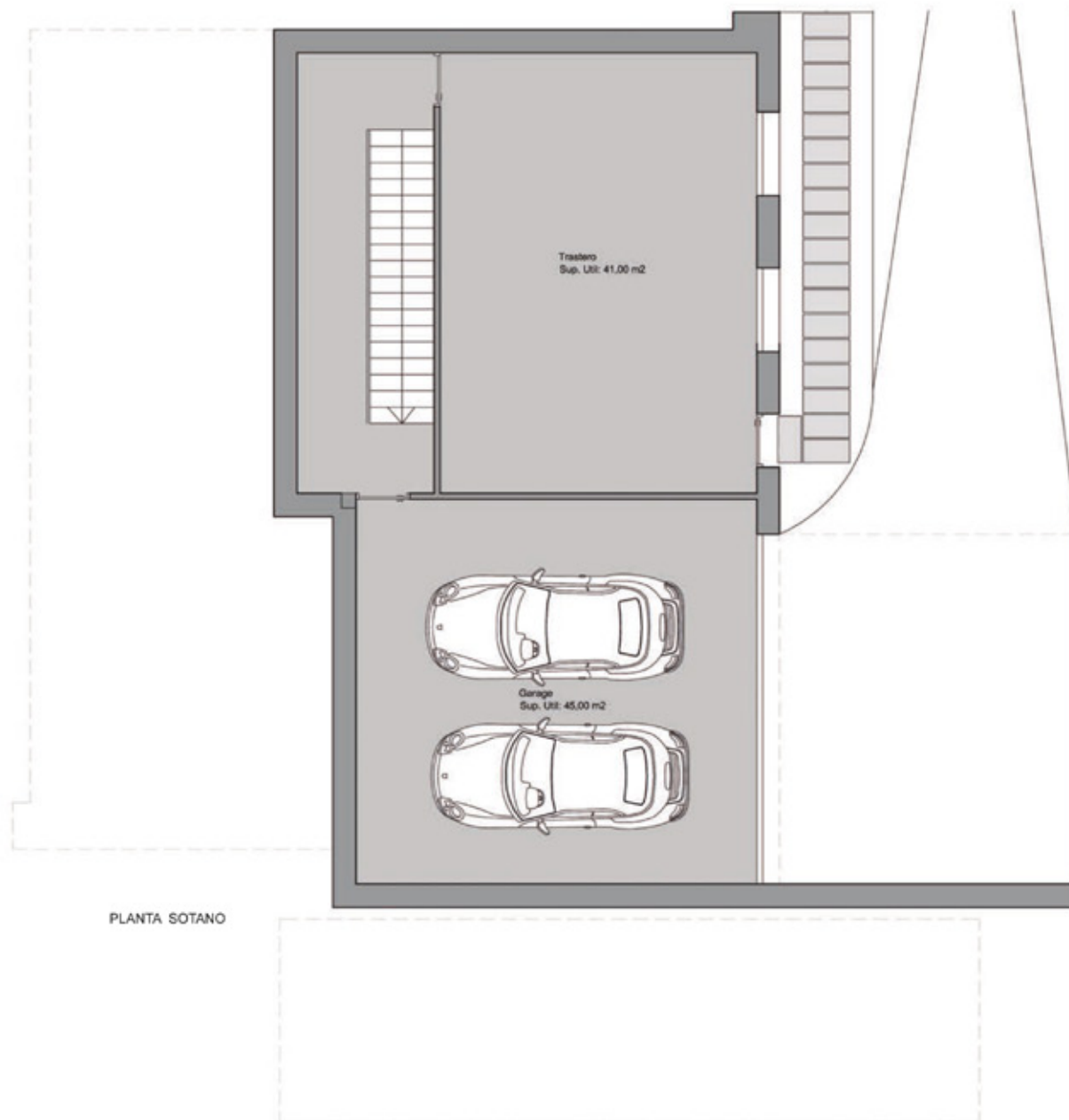
Superficie Parcela: 700 m²

SUPERFICIE PARCELA	700,00 m ²
Total sup.construída	479,00 m²
Sup. construída P. baja	140,00 m ²
Sup. construída P. primera	70,00 m ²
Sup. construída P. sótano	124,00 m ²
Terrazas P. Baja	65,00 m ²
Terrazas planta primera	80,00 m ²



PLANTA BAJA



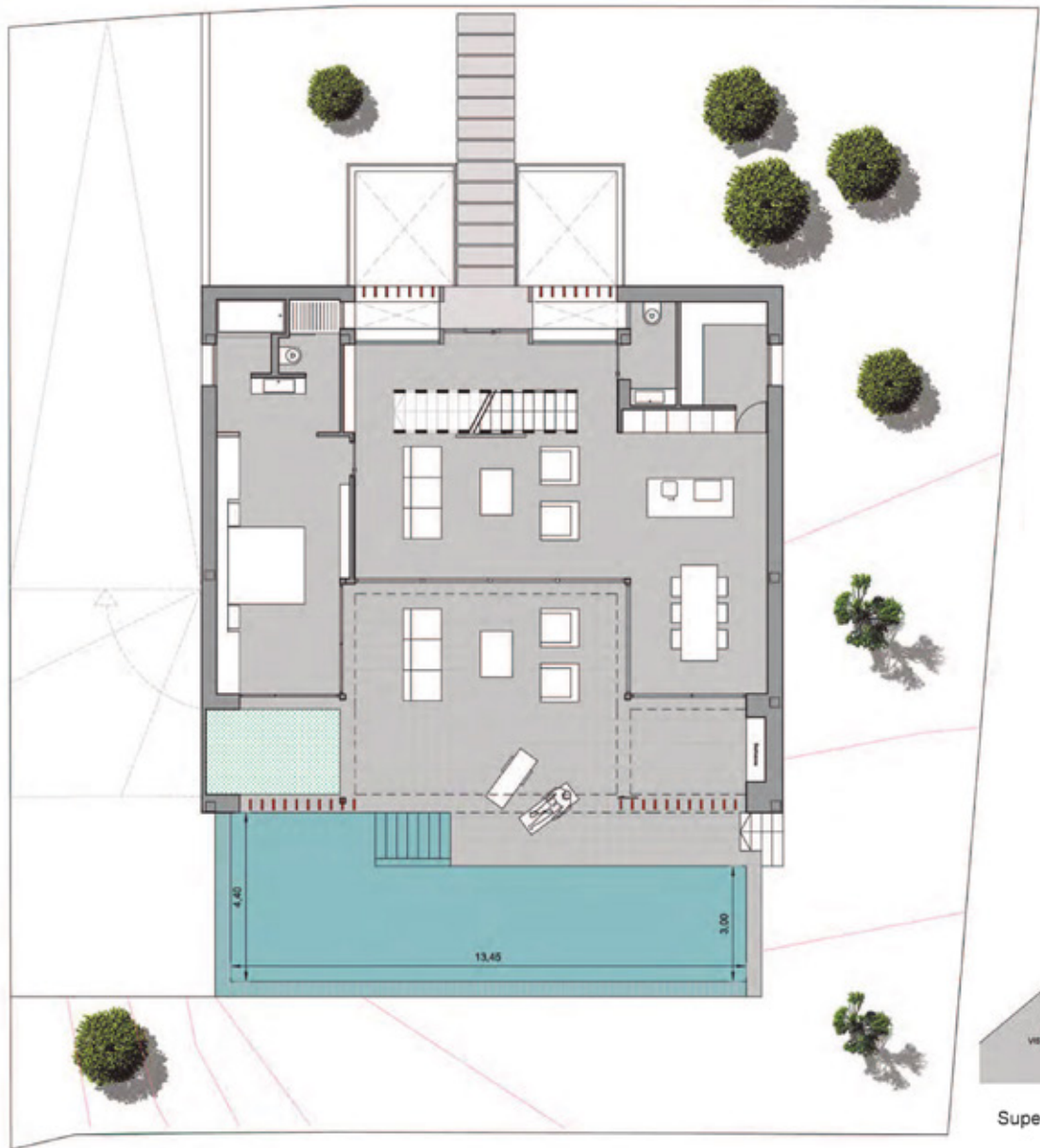


SUPERFICIE PARCELA	700,00 m ²
Total sup.construída	479,00 m²
Sup. construída P. baja	140,00 m ²
Sup. construída P. primera	70,00 m ²
Sup. construída P. sótano	124,00 m ²
Terrazas P. Baja	65,00 m ²
Terrazas planta primera	80,00 m ²



FINESTRAT PLOT 4



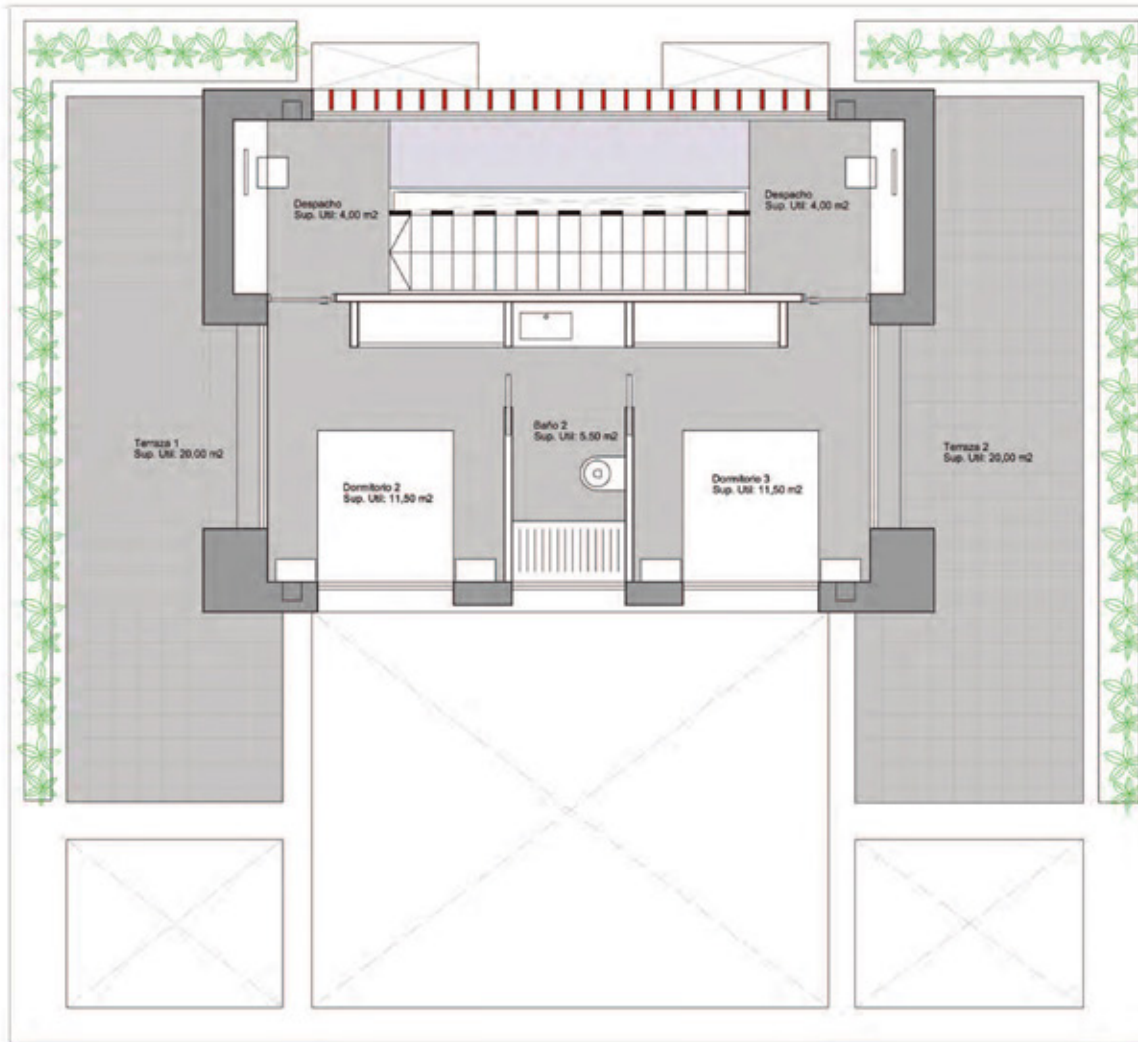


Superficie Parcela: 751 m²



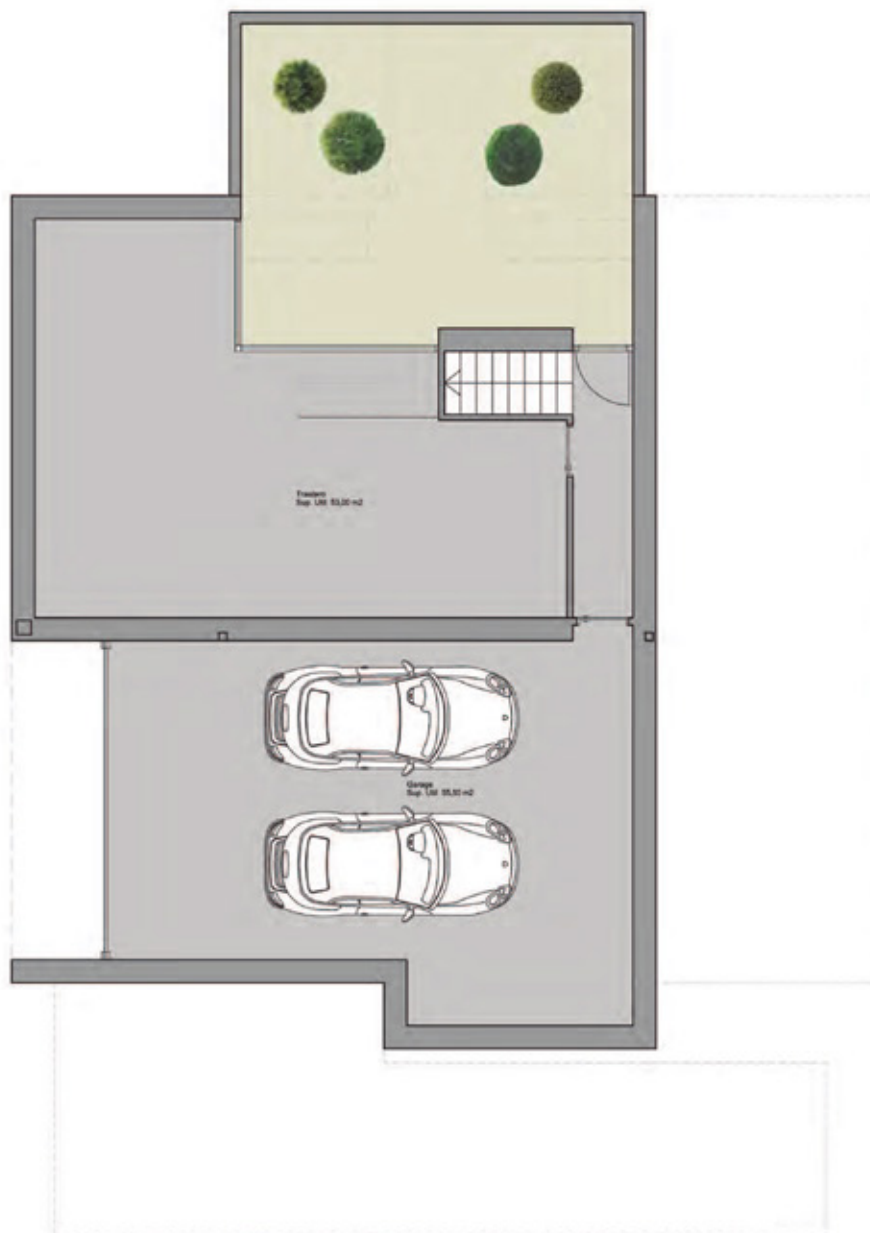
SUPERFICIE PARCELA	751,00 m ²
Total sup.construída	435,00 m²
Sup. construída P. baja	140,00 m ²
Sup. construída P. primera	60,00 m ²
Sup. construída garage (PS)	65,00 m ²
Sup. construída trastero (PS)	65,00 m ²
Terrazas descubiertas (PB)	60,00 m ²
Terrazas descubiertas (P1)	40,00 m ²

PLANTA BAJA



PLANTA PRIMERA

SUPERFICIE PARCELA	751,00 m ²
Total sup.construída	435,00 m²
Sup. construída P. baja	140,00 m ²
Sup. construída P. primera	60,00 m ²
Sup. construída garage (PS)	65,00 m ²
Sup. construída trastero (PS)	65,00 m ²
Terrazas descubiertas (PB)	60,00 m ²
Terrazas descubiertas (P1)	40,00 m ²



SUPERFICIE PARCELA	751,00 m ²
Total sup.construída	435,00 m²
Sup. construída P. baja	140,00 m ²
Sup. construída P. primera	60,00 m ²
Sup. construída garage (PS)	65,00 m ²
Sup. construída trastero (PS)	65,00 m ²
Terrazas descubiertas (PB)	60,00 m ²
Terrazas descubiertas (P1)	40,00 m ²

PLANTA SÓTANO

QUALITY SPECIFICATIONS

FOUNDATIONS AND STRUCTURE

-Reinforced concrete with separate footings, concrete beam and pot floor.

EXTERIOR BRICKWORK

-Ceramic brick (12 cm exterior) with air compartment and high density polystyrene insulation (8 cm) and thermal clay block (19 cm).

ROOF

-Flat unexploited roof and exploited roof with ceramics anti-slip finish, both with extruded polystyrene insulation (8 cm).

FAÇADE

-Single layer mortar with a scraped finish in white color. Decorative veneer.

INTERNAL WALLS

-Brick finished and rodded with plaster.

BATHROOM FINISHES

Top of the range “Gres” ceramics according to the latest design.

INTERIOR AND EXTERIOR FLOORING

-Interior, top of the range “Gres” ceramics and skirting tiles of the same material.
-Exterior, top of the range “Gres” anti-slip ceramics of the same range as interior floor tiles.

INTERIOR AND EXTERIOR LIGHTING

-Interior, LED type lights, ceiling spotlights, pitted LED strip in night areas according to interior design, switches in white color throughout and plugs according to standard regulations.
-Exterior, façade fixtures, garden lights in accordance with exterior design.

EXTERIOR CARPENTRY

-Floor recessed lacquered aluminum Schüco (colour to be chosen) with thermal break.
-Motorized venetian blinds with adjustable slats in bedrooms.

INTERIOR CARPENTRY

Kitchen:

-Fitted with base and wall units, equipped with a full set of major electric appliances (Fridge, oven, microwave oven and dishwashing machine) with energy efficiency class A++.
-Fitted single sink in stainless steel, vertical single-handle mixer tap with Osmosis system.
-Silestone quartz worktop or similar.
-Decorative ceiling extractor hood.

Interior doors:

In smooth lacquered finish (of 2,30 m high), with steel designer handles in chrome finish, door flashings.

Wardrobes:

Wardrobe with swing or sliding doors in wood with smooth lacquered finish. Interior distribution with shelves, drawers and hanger bar, adapted to the dimensions.

Bathroom units:

Complete designer bathroom vanity unit and mirror with integrated lighting.

GLASS

- Windows: Double glazing with air chamber according to Technical Building Code.
- Main entrance door in aluminum and glass with security lock.
- Fixed glass screens in showers.

BATHROOM FITTINGS AND FAUCETS

- ROCA sanitary ware, including complete bathroom vanity unit with mirror.
- Wall mounted bathroom and sanitary fittings. ROCA range in white colour.
- Bathroom sink atop a cabinet according to the latest tendencies.
- Floor level shower in the same material as interior flooring. Thermostatic taps in chrome finish.
- Wash basin: waterfall single handle tap in chrome finish, with aerator for water efficiency.

PAINTWORK

- Smooth finish in white colour.
- Decorative wallpaper above bed headboards.

HEATING AND AIR CONDITIONING

- Air conditioning with heat pump through ducts (Aerothermia system).
- Installation for electric towel rails in bathrooms.
- Water underfloor heating throughout, except basement floor.
- Ventilation and air renewal system with heat recovery.

EXTERIOR

- Pool: Infinity edge style swimming pool 10x4. LED type lighting in blue colour. Tile finish in color according to exterior terraces. Pre-installation for heat pump.
- Garden: Standard landscaping finish with irrigation system and lighting.
- Fence:
 - Main fence, concrete wall with stone finish and zones of folded metal sheets.
 - Dividing walls: house area - plastic wire mesh in green colour with hedge.

SPECIAL INSTALLATIONS

- Smart Home Technology System 3.0. with video interphone.
- Osmosis water filter system in kitchen.
- Water softening system throughout.

VARIOUS

- Storage room in basement floor (below the garage) will be finished and converted into technical room and laundry.
- The rest of the basement, will have polished concrete floors, plasterboard chamber in walls, painted ceiling, and pre-installation for water, electricity, sewage and air conditioning.

